

Kingswood Road, Brixton, SW2

2 bedroom flat - conversion for sale

£540,000

Share of Freehold

Property Details

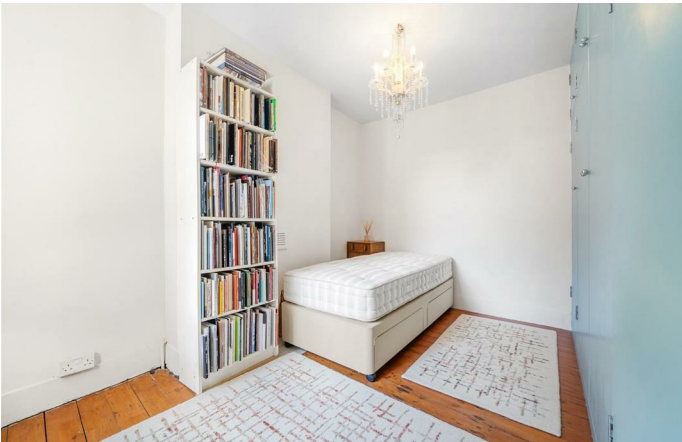
A characterful two double bedroom Victorian split-level flat with large shared garden. This charming home is set to the upper floors with an abundance of natural light yet still having direct garden access. The first of two reception rooms spans the width of the home, bathed with light from multiple sash windows, with characterful features and expansive proportions. The second reception is currently a homely dining room with table under the sash windows, perfect for hosting. The separate kitchen is well-equipped with generous storage in vibrant cabinetry, topped with ample wooden worktops down both sides. Accessed from the kitchen for an ease of transition to al-fresco dining, the garden is laid to patio framed by green borders. This is low maintenance spot, generous spot shared the downstairs neighbours. Both bedrooms are large doubles, set to differing floors for privacy. One has fitted wardrobes, whilst the other has a capacious storage nook, leading to further eaves storage. Luxuriously roomy, the bathroom is opulent yet soothing, with a free-standing bath tub with leafy views. There is storage on the landing, plus a loft and a new boiler in 2022.

Council tax band D

EPC rating D (57)

Features

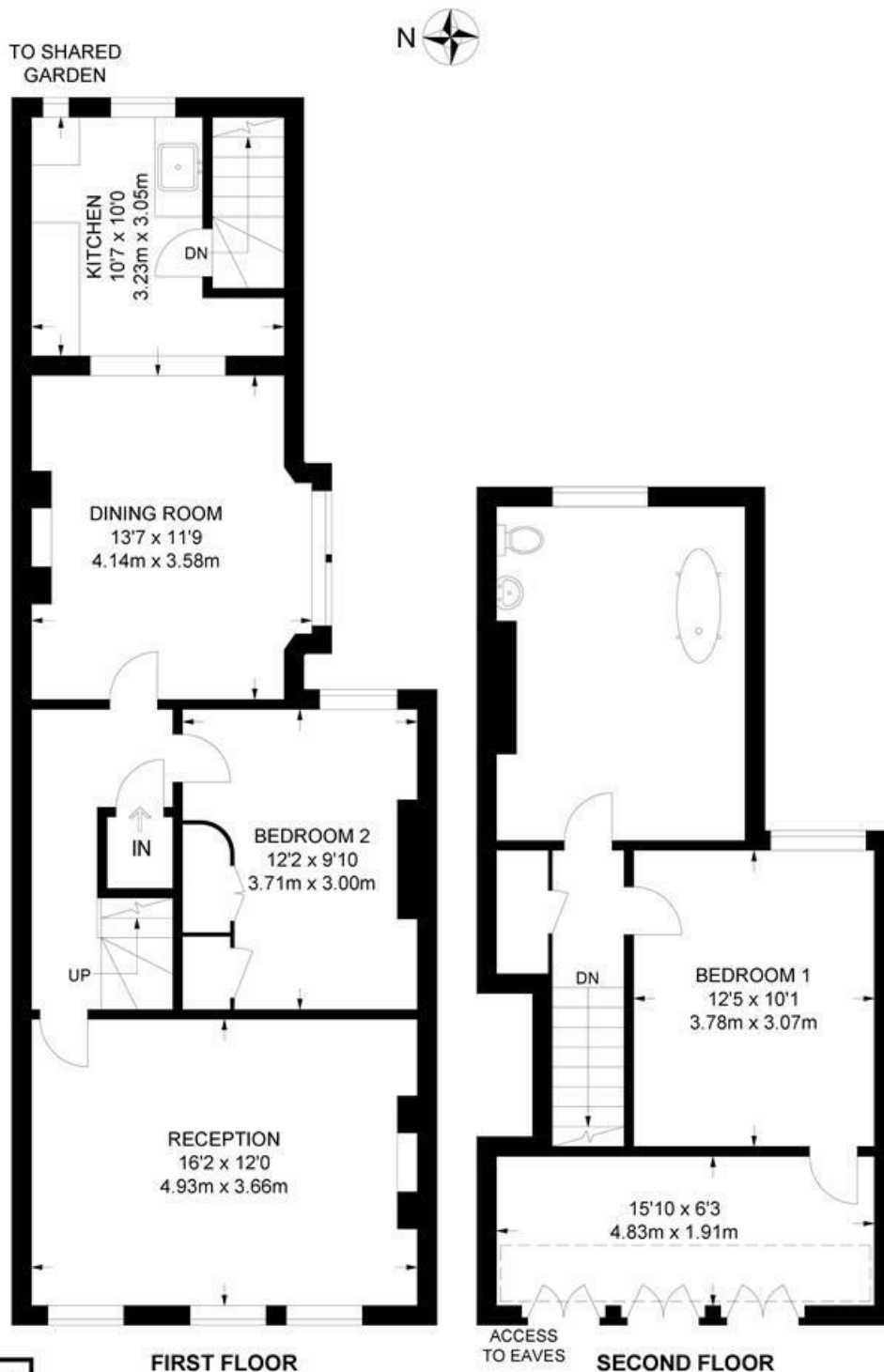
- Two double bedrooms
- Direct access to a large shared garden
- Victorian property
- Over 1,100 square feet split over two floors
- Two reception rooms
- Characterfully presented
- Quiet residential street
- Walking distance to Brixton and Clapham High Streets
- Northern and Victoria tube lines
- Share of freehold



Kingswood Road, Brixton, SW2

Kingswood Road, SW2
2 Bedroom Flat

APPROXIMATE GROSS INTERNAL AREA: 1110 SQ FT / 103.1 SQ M



While we try our very best, floor plans are produced as a guide only and we take no responsibility for the precise accuracy with which any property is represented.

Kingswood Road, Brixton, SW2

